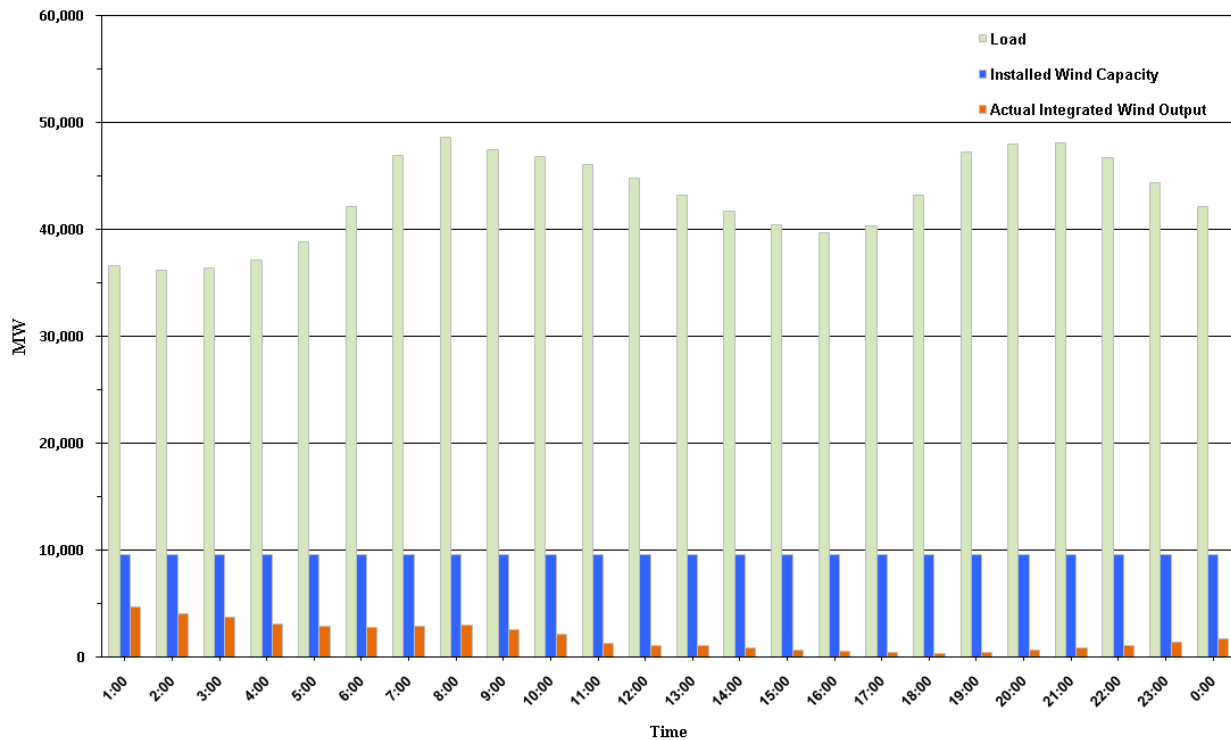




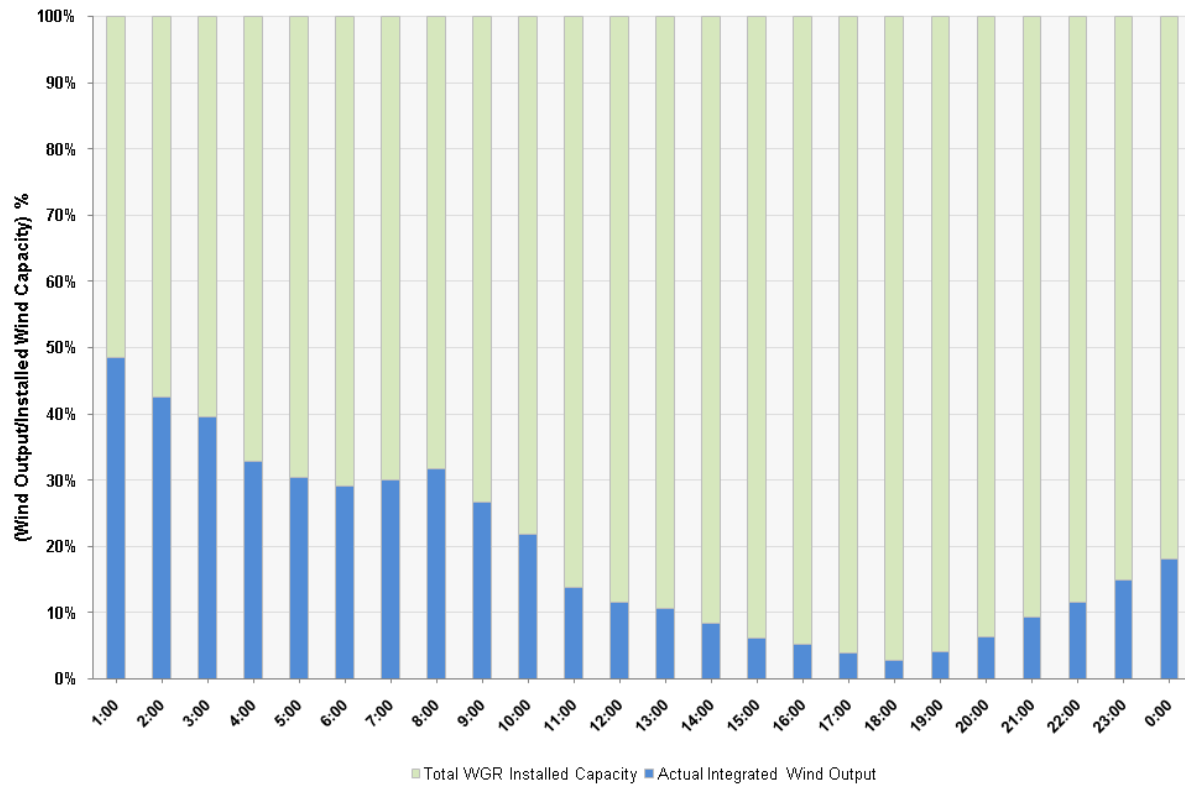
ERCOT Grid Operations Wind Integration Report: 01/11/11

Peak Load	48,646 MW
Load Peak Hour	08
Wind Record 12/11/10	7,227 MW
Max Wind Value	4,837 MW
Wind Peak Hour	00:00:32
Wind Integration %	13.08

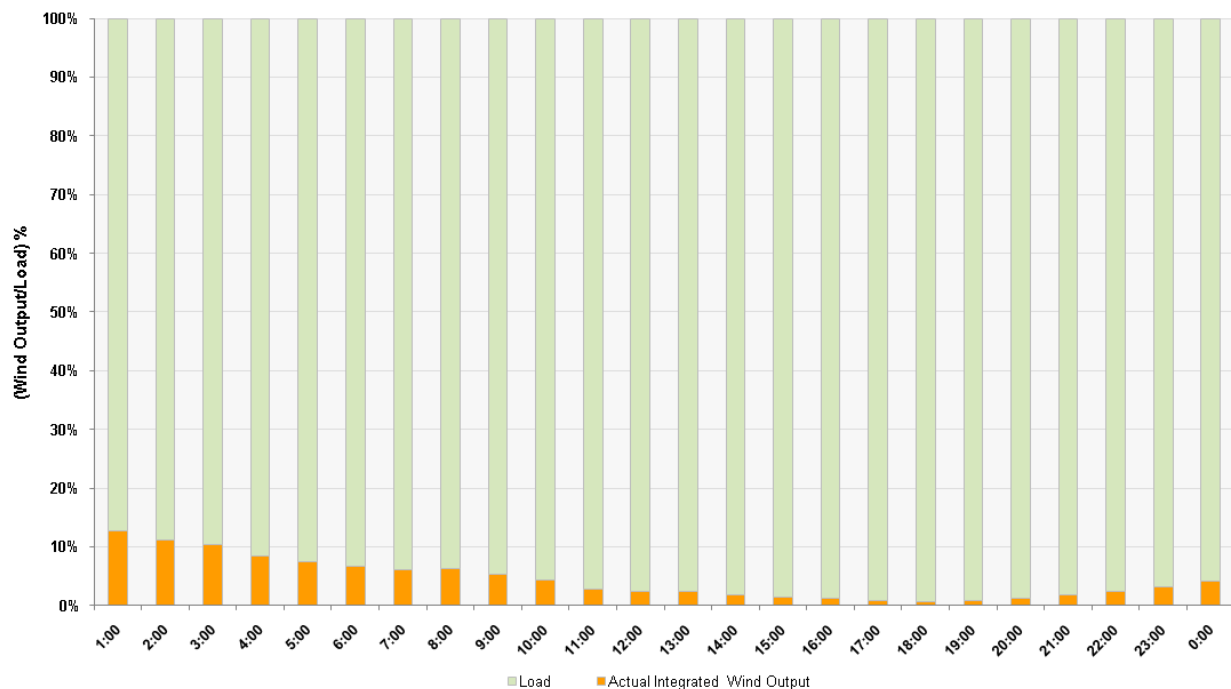
Hourly Average Actual Load vs. Actual Wind Output
01-11-2011



Actual Wind Output as a Percentage of the Total Installed Wind Capacity
01-11-2011



Actual Wind Output as a Percentage of the ERCOT Load
01-11-2011



ERCOT Load vs. Actual Wind Output 01/04/11 - 01/11/11